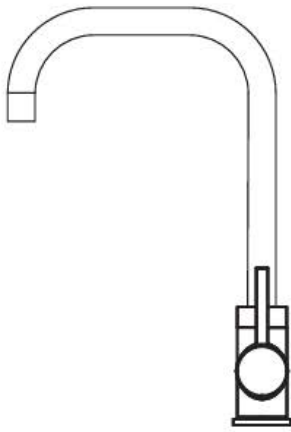
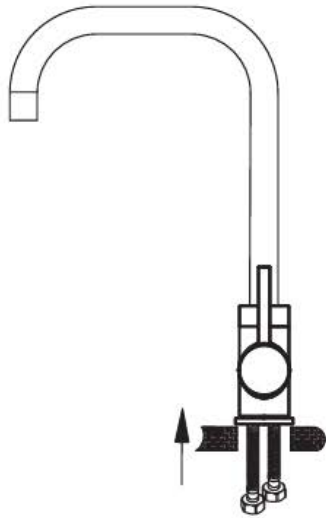


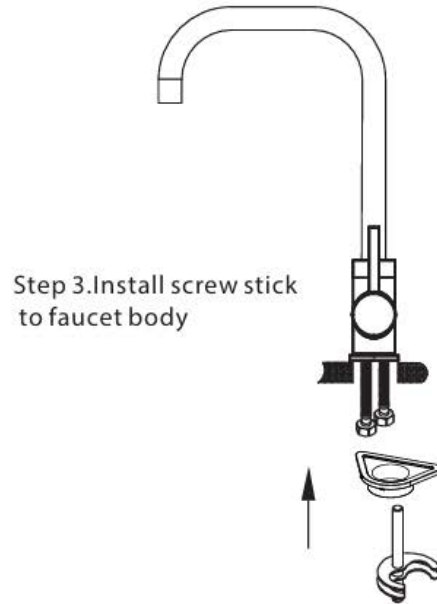
## Installing instruction



Step 1. Check all spare parts ready

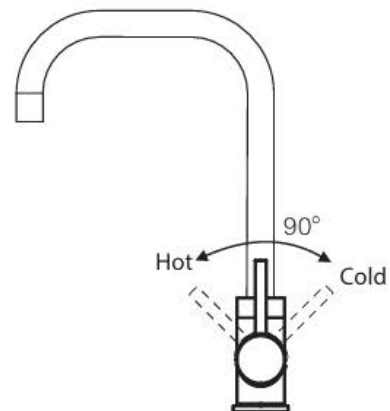
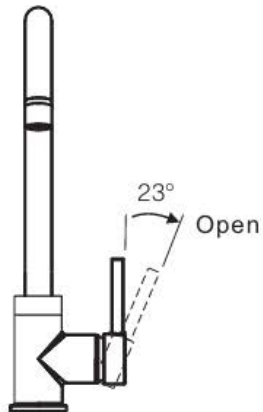


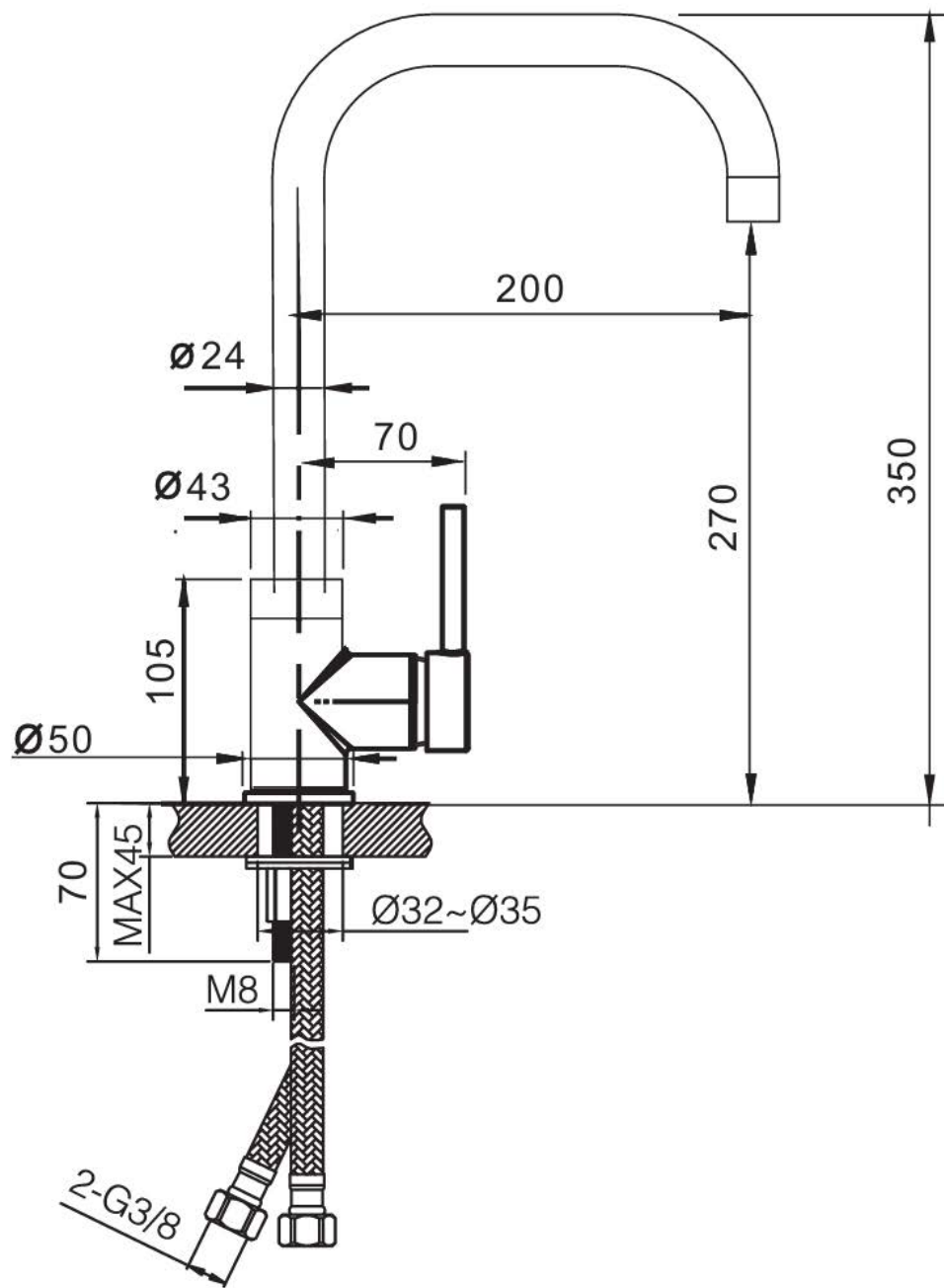
Step 2. Install inlet pipe to faucet body



Step 3. Install screw stick to faucet body

## Useage function instruction





Product sizes (cm)	42*24.5*5.9
Weight (kg)	0.93
Guarantee	5 years
Max Preassure (bar)	5
Min Preassure (bar)	0.5
Optimum preassure (bar)	1-4 (Recommended 3)
Max. temperature	85°C
Min temperature	65°C

# FLOW RATE

Detalles	
FLOW RATE REF	GCR004
mixer water 0.1Mpa(L/MIN)	10.15
mixer water 0.3Mpa(L/MIN)	17.77
mixer water 0.5Mpa(L/MIN)	23
singer cold water 0.1Mpa(L/MIN)	8.16
singer cold water 0.3Mpa(L/MIN)	14.3
singer cold water 0.5Mpa(L/MIN)	18.6