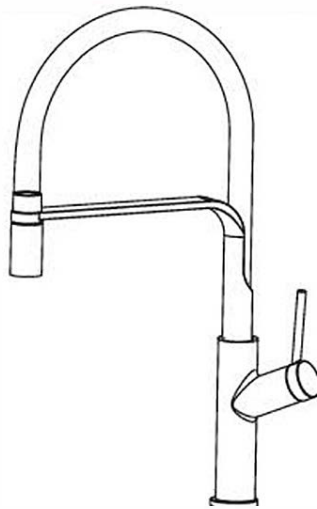
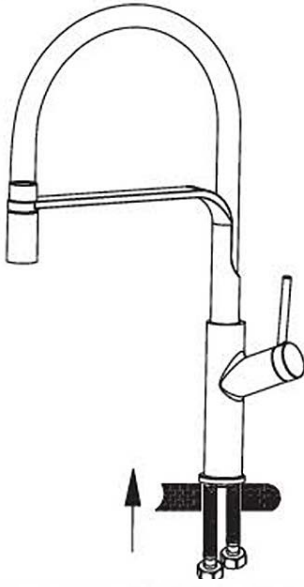


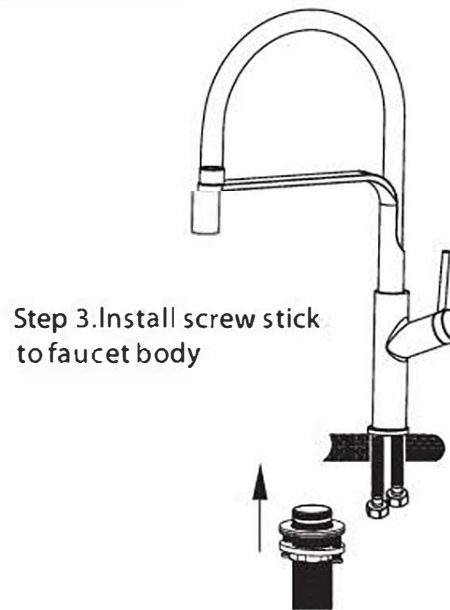
Installing instruction



Step 1. Check all spare parts ready

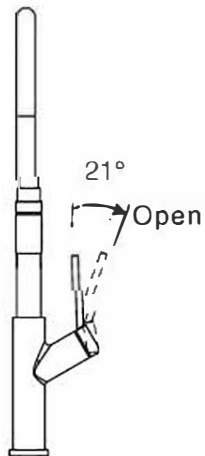


Step 2. Install inlet pipe to faucet body



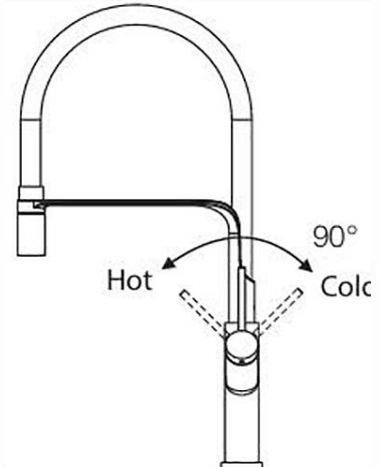
Step 3. Install screw stick to faucet body

Useage function instruction



21°

Open



90°

Hot

Cold

FLOW RATE

| Detalles | |
|------------------------------------|--------|
| FLOW RATE REF | GCE022 |
| mixer water 0.1Mpa(L/MIN) | 5.89 |
| mixer water 0.3Mpa(L/MIN) | 10.33 |
| mixer water 0.5Mpa(L/MIN) | 13.43 |
| singer cold water 0.1Mpa(L/MIN) | 5.06 |
| singer cold water 0.3Mpa(L/MIN) | 8.94 |
| singer cold water 0.5Mpa(L/MIN) | 11.64 |